

**/Open hardware**  
**/Ontologies**  
**/Metadata**

Emilio Velis

CC El Salvador / OSHWA El Salvador

# The (original) problem

How to identify open works in general

# Initial questions

- How can we find open Works not in ~~silos~~ repositories?
- How can we search and attribute Works more effectively?
- How can we create works offline?

Use this prototype to find images that you can use and remix, across several open archives. Give us your feedback, and help us design a front door to the commons.

## Filters

### FIND IMAGES I CAN...

Use for commercial purposes  Modify, adapt, or build upon

### SEARCH WITHIN:

Title  Creator  Tags

### SEARCH FROM THESE COLLECTIONS:

Photographs

500px  Flickr

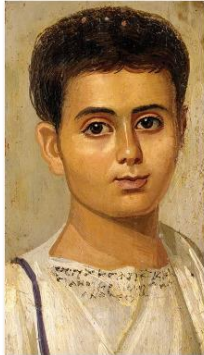
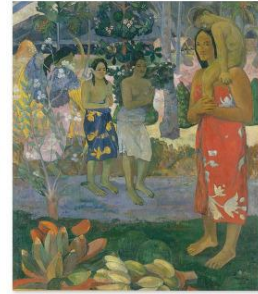
Cultural works

Metropolitan Museum of Art  New York Public Library  Rijksmuseum

Page 1 of 7 pages

« Previous Next »



**Blogs / Digital Underground / Introducing Open Access at The Met**

## Introducing Open Access at The Met

February 7, 2017

**Loic Tallon**, Chief Digital Officer

As of today, all images of public-domain works in The Met collection are available under [Creative Commons Zero \(CC0\)](#). So whether you're an artist or a designer, an educator or a student, a professional or a hobbyist, you now have more than 375,000 images of artworks from our collection to use, share, and remix—without restriction. This policy change to [Open Access](#) is an exciting milestone in The Met's digital evolution, and a strong statement about increasing access to the collection and how to best fulfill the Museum's mission in a digital age.

## Object Details

<b>Publisher:</b>	Issued by Allen & Ginter (American, Richmond, Virginia)
<b>Lithographer:</b>	Lithography by Lindner, Eddy & Claus (American, New York)
<b>Date:</b>	1890
<b>Medium:</b>	Commercial color lithograph
<b>Dimensions:</b>	Sheet: 2 7/8 x 3 1/4 in. (7.3 x 8.3 cm)
<b>Classifications:</b>	Prints, Ephemera
<b>Credit Line:</b>	The Jefferson R. Burdick Collection, Gift of Jefferson R. Burdick
<b>Accession Number:</b>	63.350.202.41.16

Hardware is a  
one-of-a-kind  
problem.



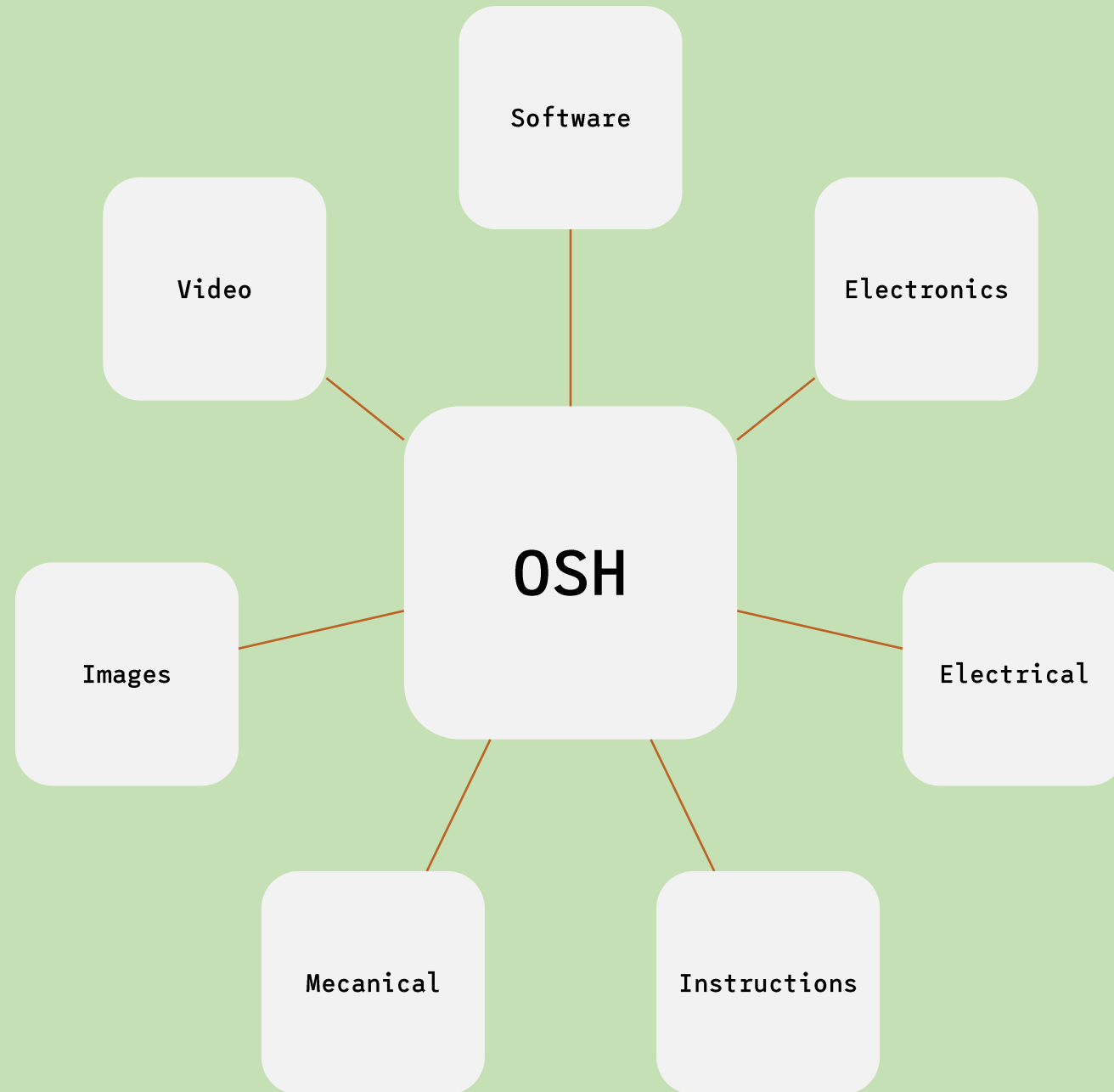
MBM\_9697 by [ehab almassrey](#) on Flickr (CC BY 2.0).



# The line for separating “unique” works gets blurry

---

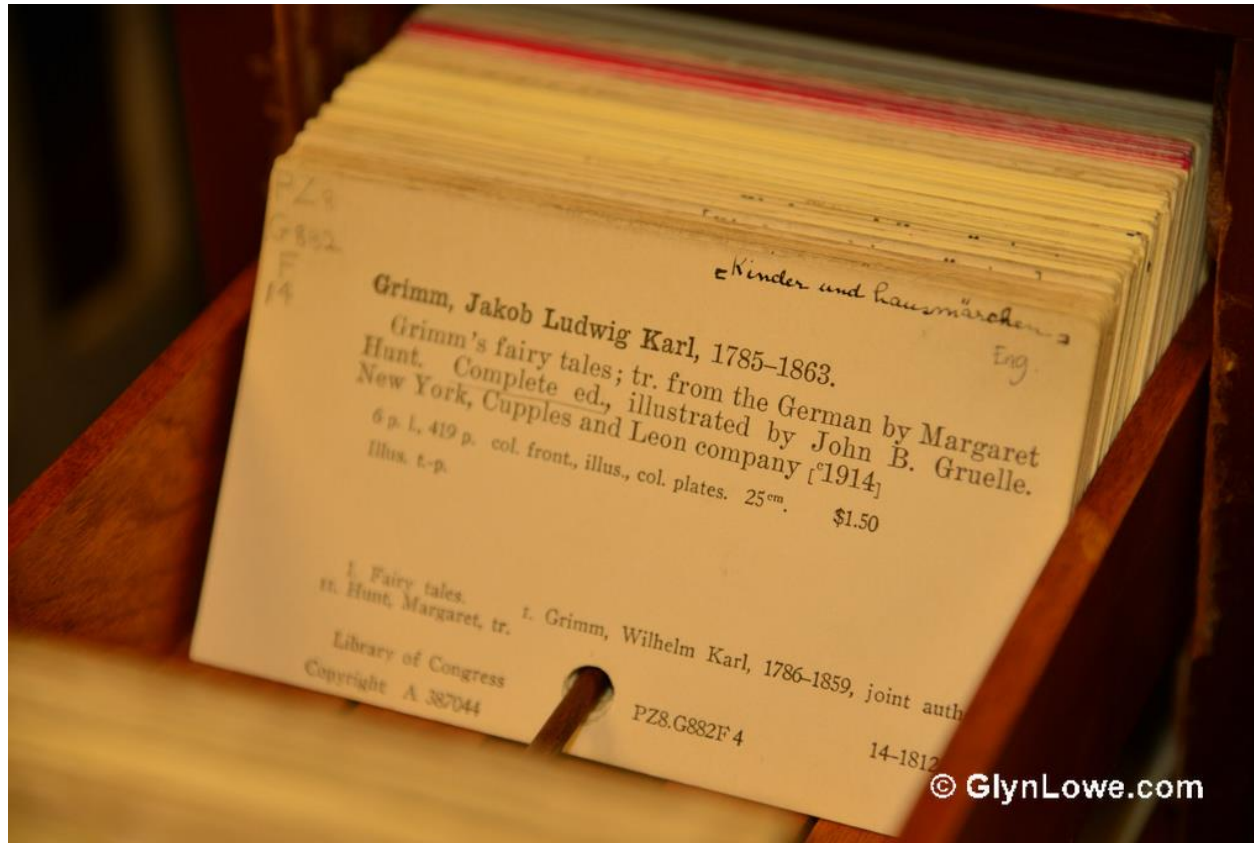
- Individual physical works
  - Work editions
    - Different formats



# Working on this

- OSHWA (Certification)
- OSE Germany (DIN Spec 3105)
- Makernet Alliance (Open Know-How)

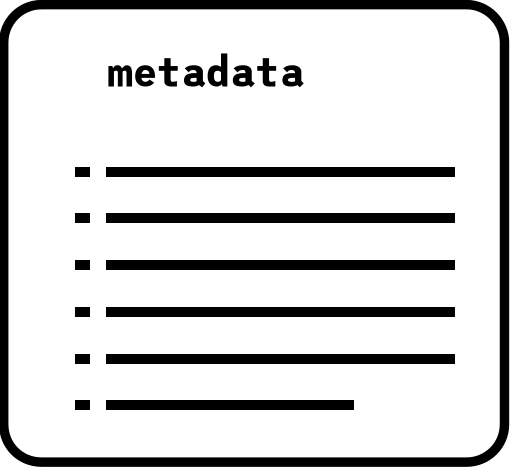
# Proposal: Metadata Standard



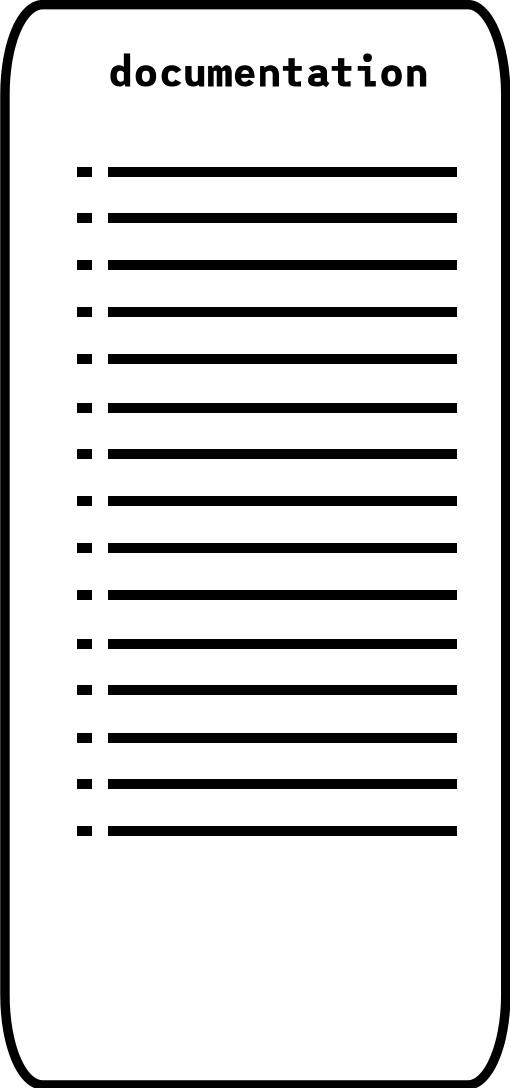
Card Catalog by Glyn Lowe on Flickr (CC BY 2.0)

# Why?

- Decentralization of open repositories
- Works can be found and catalogued
- Documentation can start offline for makers



METADATA.txt



README.txt

# Definitions

## Conceptual

- The problem that it solves
- What domain it is intended for
- Target audience

## Operational

- Sum of its parts
- Type of solution
- How it functions
- Type of interface
- Fabrication requirements

# Exercise: sorting metadata

1. Check open hardware repositories
  - <https://github.com/nasa-jpl/open-source-rover>
  - [https://github.com/Protocentral/ADS1292rShield\\_Breakout](https://github.com/Protocentral/ADS1292rShield_Breakout)
2. Find out which fields of my metadata wishlist can be found in the README file. Add more if you think they are important.
3. Sort the cards in three categories:
  - Group 1 (Important): Choose 8
  - Group 2: (Not important) Choose 8
  - Group 3: The rest (9+).